

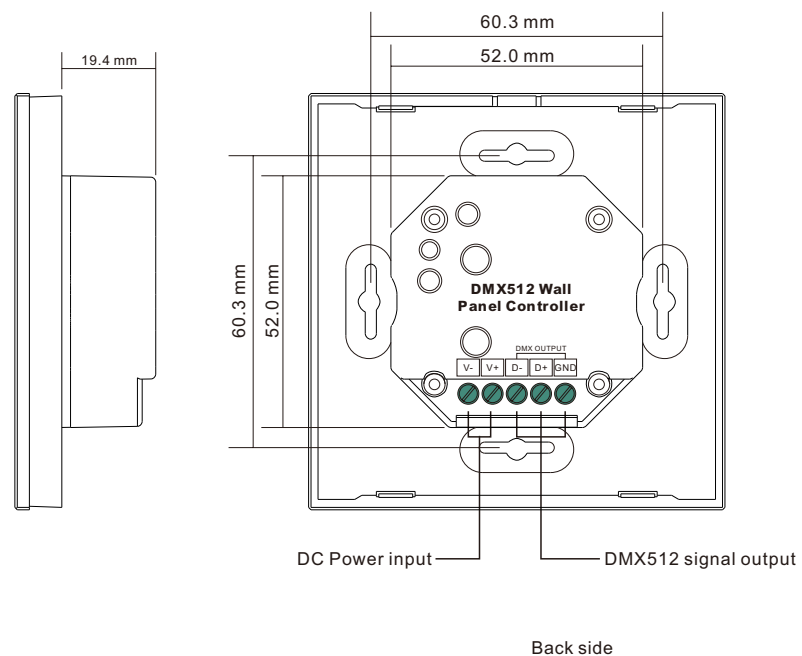
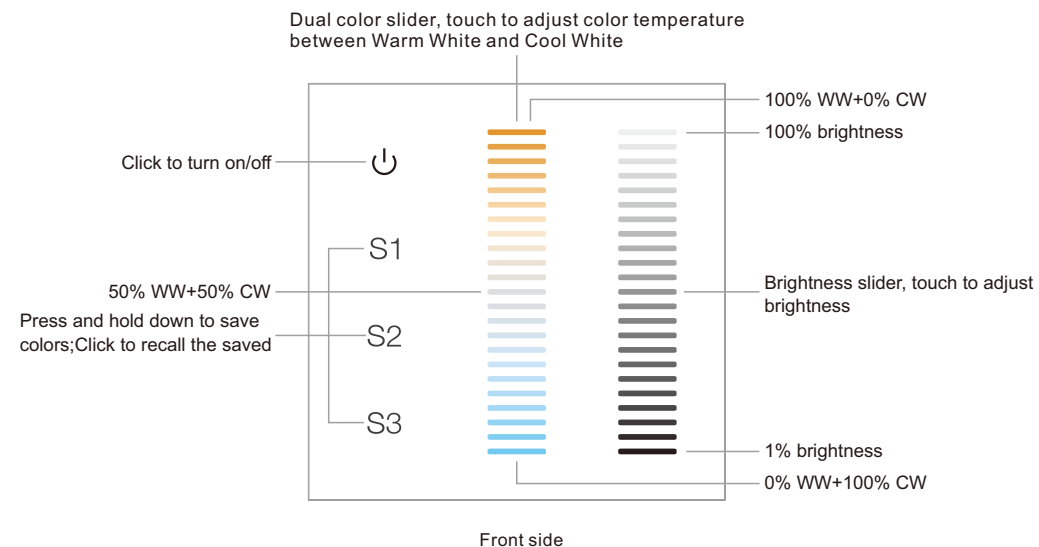
Dual Color DMX512+RF Controller

09.34BDE.04713



Important: Read All Instructions Prior to Installation

Function introduction



Product Data

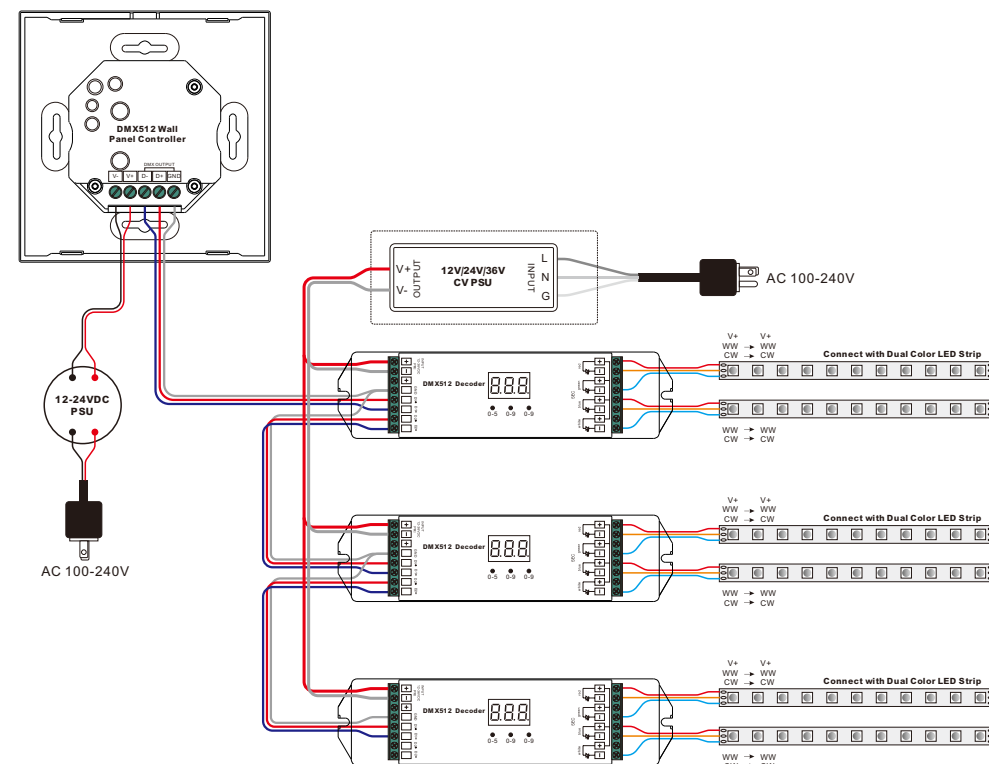
Output Signal	DMX512 signal
Power Supply	12-24VDC
Power consumption	< 20 mA
Operating temperature	0-40°C
Relative humidity	8% to 80%
Dimensions	86x86x29.1mm

- Touch sensitive
- Glass interface(white & black)
- Standard DMX512 Signal output
- Can Send RF signal, control RF receivers
- Radio frequency: 869.5MHz
- Control CCT color
- Control 1 zone/area
- Waterproof grade: IP20

Safety & Warnings

- DO NOT install with power applied to device.
- DO NOT expose the device to moisture.


Wiring diagram

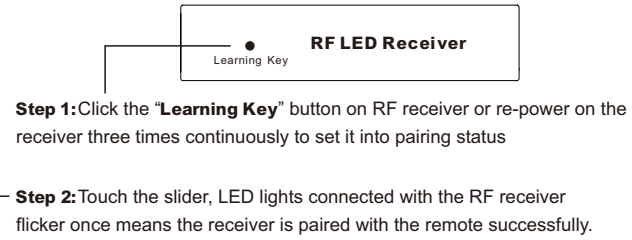
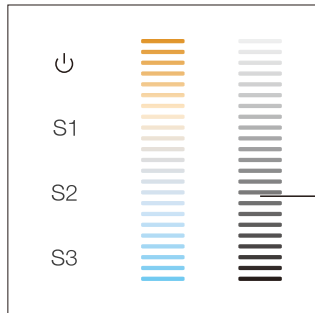


Set DMX Address

This DMX master controller can control many DMX decoders, please set all decoders' address as 001.

Pair with RF receiver

1. Do wiring the wall panel & RF receiver according to wiring diagram (please refer to the instruction of RF receiver that you would like to pair with)
2. Power on, then touch the button  to turn on the controller, indicator of the controller turned blue



Installation

